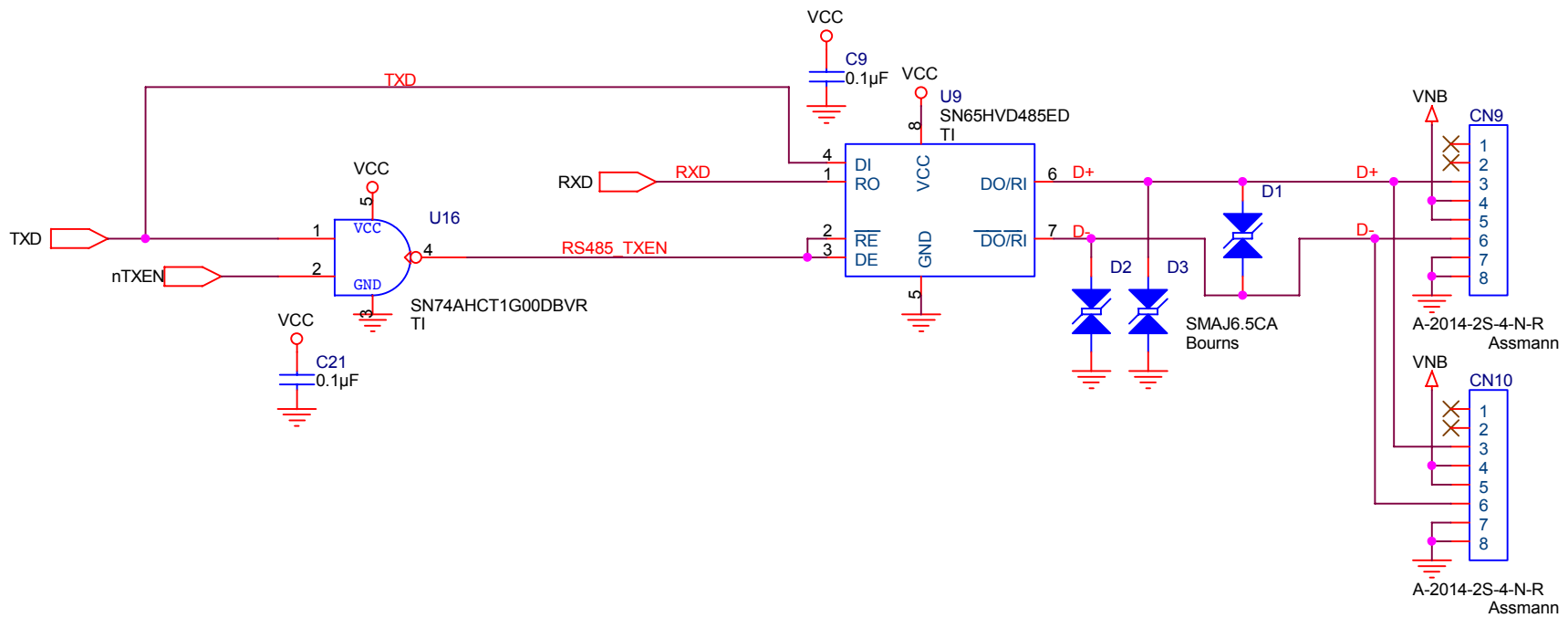


$VREF = 3.3 \times 4.64k / (2.05k + 4.64k) = 2.289V$
 $I(trip) = (2.289V - 2.048V) / 0.22 \text{ ohms} = 1.1A$
 sense rises 220mV per amp

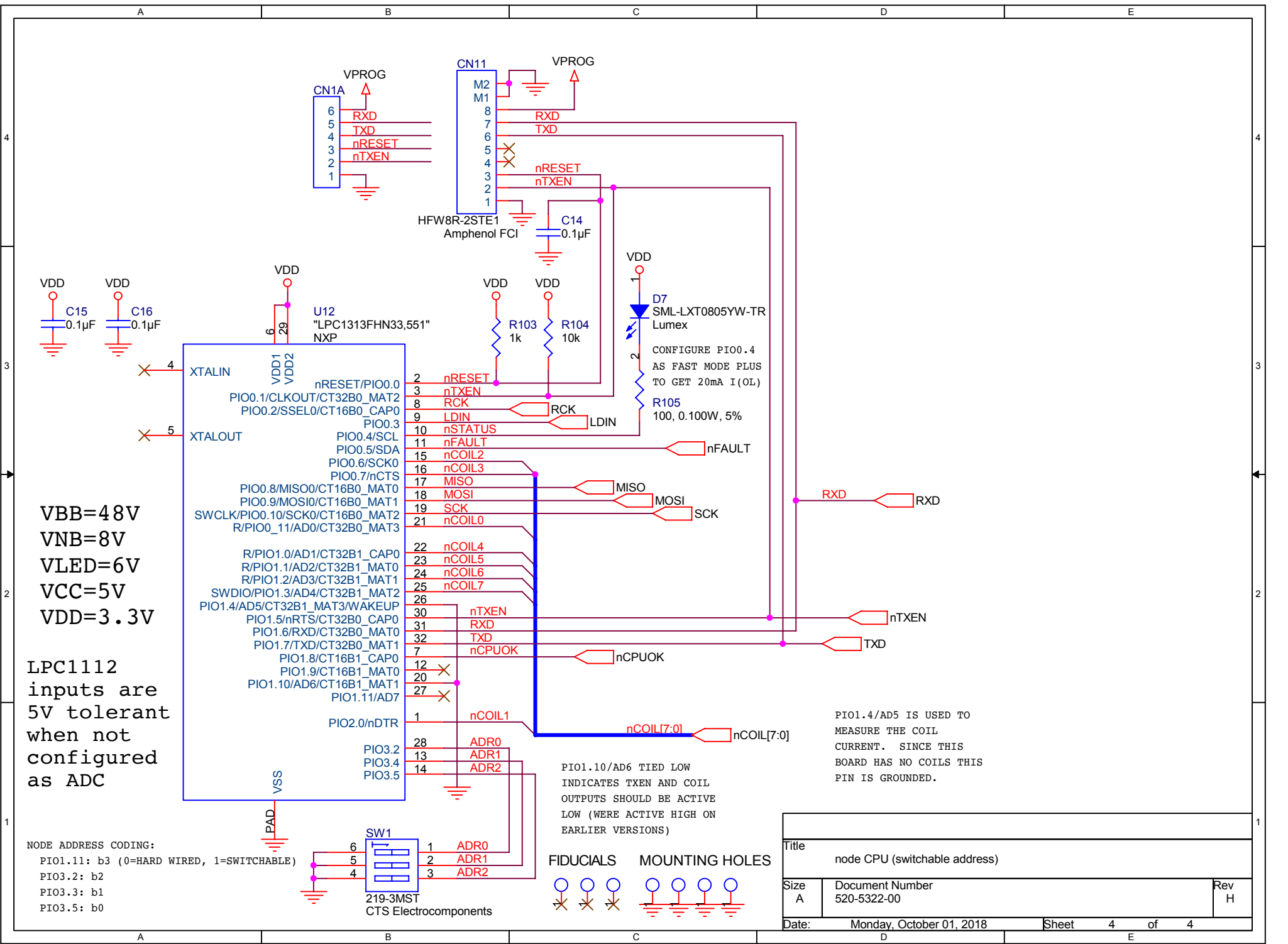
PLACE R110 OR R111, NOT BOTH

nFAULT IS ASSERTED WHEN OVERCURRENT CONDITION IS DETECTED.

Title	switch/lamp - i/o	Rev	H
Size	Document Number		
C	520-5322-00		
Date:	Monday, October 01, 2018	Sheet	1 of 4



Title		
switch/lamp -- communication		
Size	Document Number	Rev
A	520-5322-00	H
Date:	Monday, October 01, 2018	Sheet 2 of 4



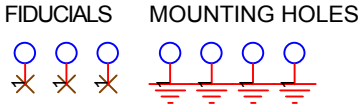
VBB=48V
 VNB=8V
 VLED=6V
 VCC=5V
 VDD=3.3V

LPC1112
 inputs are
 5V tolerant
 when not
 configured
 as ADC

NODE ADDRESS CODING:
 PIO1.11: b3 (0=HARD WIRED, 1=SWITCHABLE)
 PIO3.2: b2
 PIO3.3: b1
 PIO3.5: b0

PIO1.4/AD5 IS USED TO
 MEASURE THE COIL
 CURRENT. SINCE THIS
 BOARD HAS NO COILS THIS
 BOARD HAS NO COILS THIS
 BOARD HAS NO COILS THIS
 BOARD HAS NO COILS THIS
 BOARD HAS NO COILS THIS
 BOARD HAS NO COILS THIS
 BOARD HAS NO COILS THIS

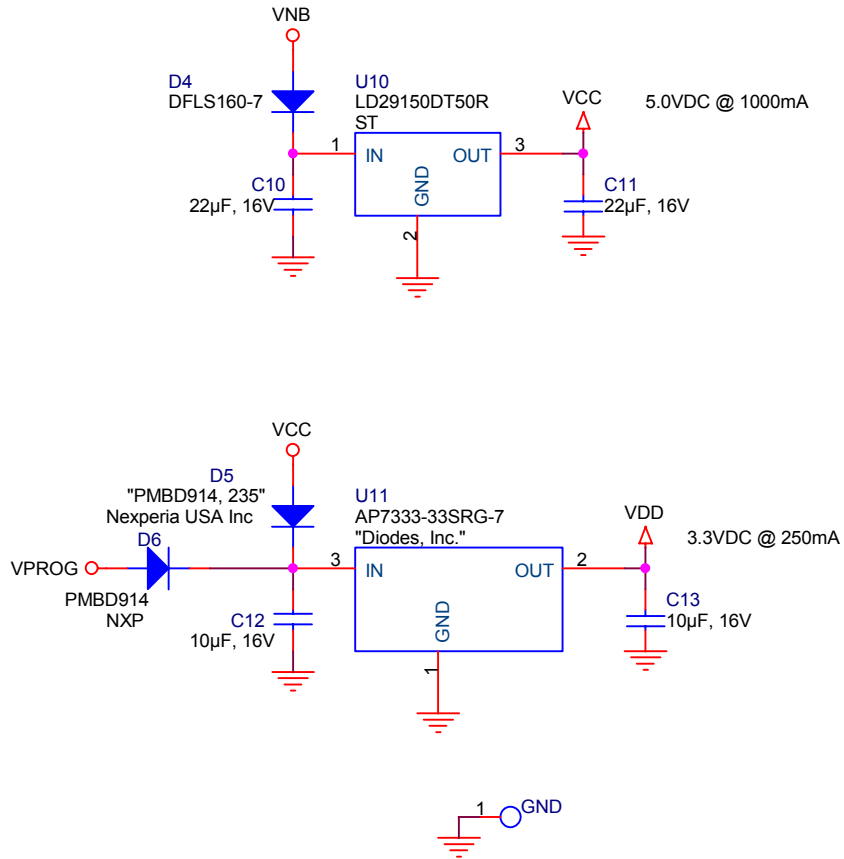
PIO1.10/AD6 TIED LOW
 INDICATES TXEN AND COIL
 OUTPUTS SHOULD BE ACTIVE
 LOW (WERE ACTIVE HIGH ON
 EARLIER VERSIONS)



Title		
node CPU (switchable address)		
Size	Document Number	Rev
A	520-5322-00	H
Date:	Monday, October 01, 2018	Sheet 4 of 4

STATUS LED (D7, YELLOW)

10Hz 50% power okay, processor in boot mode waiting for runtime update: check node cable, ensure other nodes are communicating, check communication interface
 1Hz 90% power okay, processor in runtime mode but not receiving from CPU: check node cable, ensure other nodes are communicating, check communication interface
 flickering power okay, processor communicating and operating correctly



Title		
switch/lamp -- power supply		
Size	Document Number	Rev
A	520-5322-00	H
Date:	Monday, October 01, 2018	Sheet 3 of 4